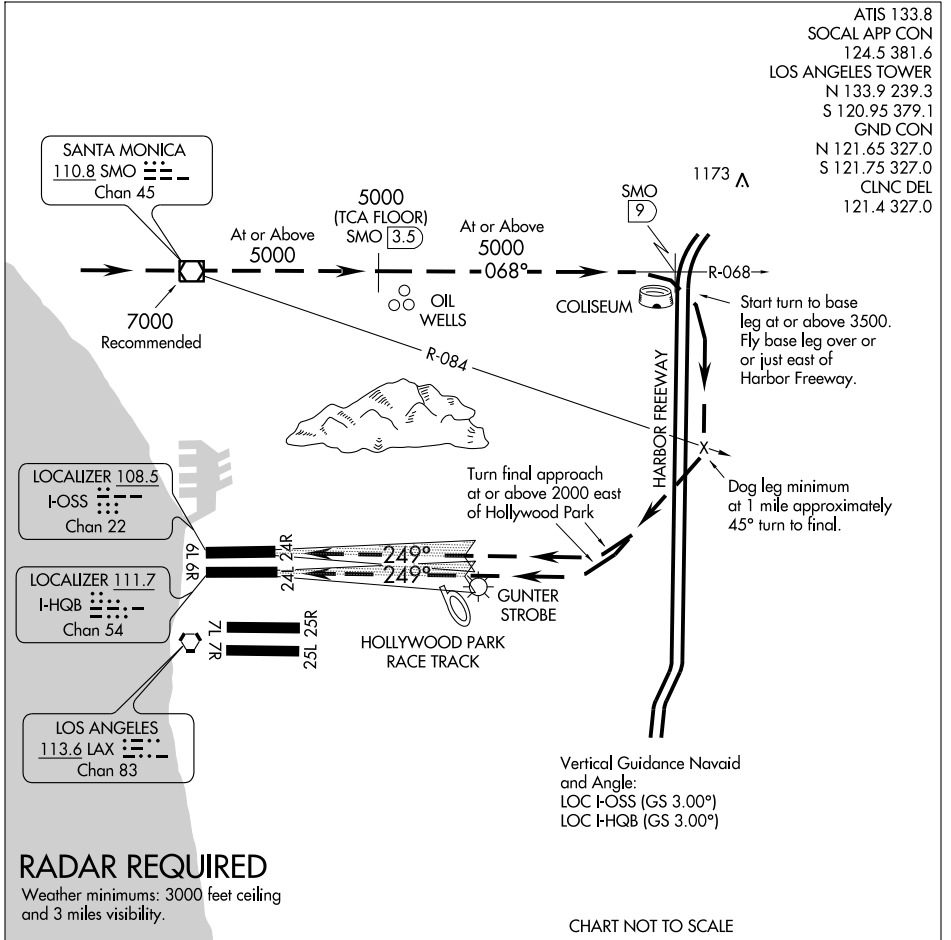


STADIUM VISUAL RWY 24L/R

LOS ANGELES INTL (LAX)
LOS ANGELES, CALIFORNIA

- ATIS 133.8
- SOCAL APP CON 124.5 381.6
- LOS ANGELES TOWER N 133.9 239.3
- S 120.95 379.1
- GND CON N 121.65 327.0
- S 121.75 327.0
- CLINC DEL 121.4 327.0



SW-3, 03 JUL 2008 to 31 JUL 2008

SW-3, 03 JUL 2008 to 31 JUL 2008

RADAR REQUIRED

Weather minimums: 3000 feet ceiling and 3 miles visibility.

CHART NOT TO SCALE

STADIUM VISUAL APPROACH

When visual approaches to Runways 24L/R are in progress, clearances to aircraft from the north and northwest will be given utilizing the following phraseology:

"(IDENT) CLEARED FOR STADIUM VISUAL RUNWAY 24 LEFT/RIGHT APPROACH."

A descent profile of approximately 3° starting at 7000 over SMO VOR/DME may be made with reference to the minimum altitudes above.

STADIUM VISUAL RWY 24L/R

LOS ANGELES, CALIFORNIA
LOS ANGELES INTL (LAX)