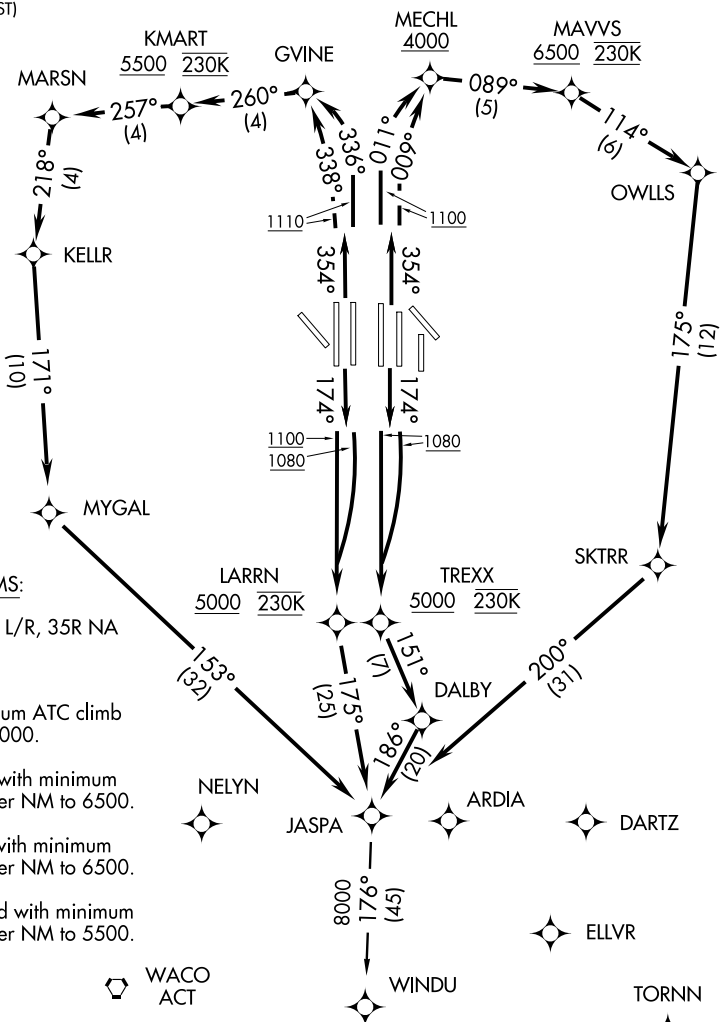


# JASPA TWO DEPARTURE (RNAV)

ATIS 135.925  
 CLNC DEL 128.25  
 GND CON 121.85 (WEST)  
 121.65 121.8 (EAST)  
 DFW TOWER  
 126.55 127.5 (EAST)  
 124.15 134.9 (WEST)  
 REGIONAL DEP CON  
 125.12 353.95  
 (Rwy 17R/C)  
 125.12 353.95  
 (Rwy 18R/L)  
 126.47 363.15  
 (Rwy 36R/L)  
 118.55 290.35  
 (Rwy 35L/C)



### TAKE-OFF MINIMUMS:

Rwys 13L/R, 17L, 31L/R, 35R NA  
 - ATC Request.  
 Rwy 17C/R, 18L/R:  
 Standard with minimum ATC climb  
 of 500' per NM to 5000.  
 Rwy 35C: Standard with minimum  
 ATC climb of 536' per NM to 6500.  
 Rwy 35L: Standard with minimum  
 ATC climb of 530' per NM to 6500.  
 Rwy 36L/R: Standard with minimum  
 ATC climb of 500' per NM to 5500.

NOTE: TAKE-OFF RWYs 17C/R: Do not exceed 230K until TREXX WP.  
 TAKE-OFF RWYs 18L/R: Do not exceed 230K until LARRN WP.  
 TAKE-OFF RWYs 35L/C: Do not exceed 230K until MAVVS WP.  
 TAKE-OFF RWYs 36L/R: Do not exceed 230K until KMART WP.

NOTE: 1. DME/DME/IRU or GPS Required  
 2. RNAV 1.

NOTE: For Turbo Jets only.

NOTE: Chart not to scale.

(NARRATIVE ON FOLLOWING PAGE)

NOTE: RADAR required.

SC-2, 03 JUL 2008 to 31 JUL 2008

SC-2, 03 JUL 2008 to 31 JUL 2008

# JASPA TWO DEPARTURE (RNAV)