

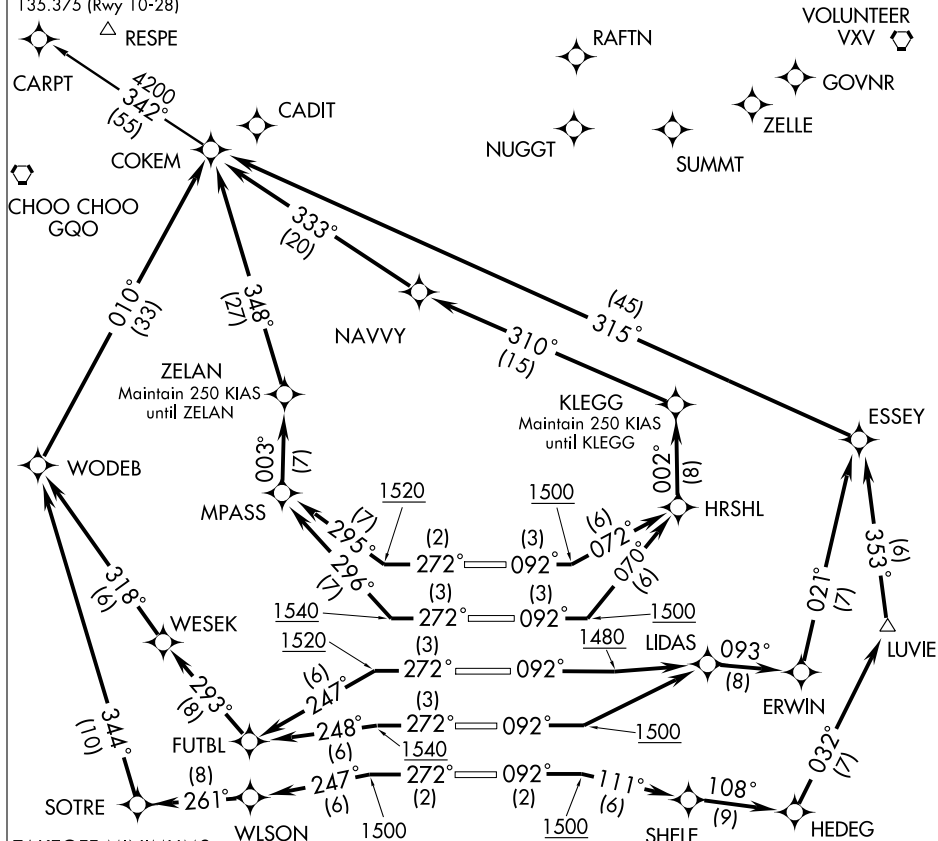
COKEM FOUR DEPARTURE (RNAV)

SL-26 (FAA)

ATLANTA, GEORGIA

ATIS DEP 125.55
 CLNC DEL 118.1
 GND CON
 121.9 381.6 (Rwys 8L-26R, 8R-26L)
 121.75 381.6 (Rwys 9L-27R, 9R-27L)
 121.65 381.6 (Rwy 10-28)
 ATLANTA TOWER
 119.1 381.6 (Rwy 8L-26R)
 125.325 381.6 (Rwy 8R-26L)
 119.3 381.6 (Rwy 9R-27L)
 123.85 381.6 (Rwy 9L-27R)
 119.5 381.6 (Rwy 10-28)
 ATLANTA DEP CON
 125.7 (Rwys 8L-26R, 8R-26L)
 135.7 (Rwys 9L-27R, 9R-27L)
 135.375 (Rwy 10-28)

NOTE: Accelerate to 250 KIAS, if unable, advise ATC.
 NOTE: For Turbojet aircraft only.
 NOTE: RADAR Required.
 NOTE: Use departure frequency depicted unless otherwise assigned.
 NOTE: DME/DME/IRU or GPS Required.
 NOTE: RNAV 1.
 NOTE: Midfield aircraft at Ramps 1, 2, 3, 4, 5, and 6 will advise Ramp Towers of Departure SID prior to pushback. Any aircraft receiving clearance via PDC may monitor Atlanta Departure ATIS for departure runway. Upon receipt of ATC clearance (from ATL Clearance Delivery), readback only your call sign and transponder code, unless you have a question.



TAKEOFF MINIMUMS:
 Rwy 8L, 9R, 10, 26L, 26R, 27L, 27R, 28:
 Standard with the following ATC climb rates:
 Rwy 8L, 9R, 10, 28:
 ATC climb of 500' per NM to 1500.
 Rwy 26L, 27L:
 ATC climb of 500' per NM to 1540.
 Rwy 26R, 27R:
 ATC climb of 500' per NM to 1520.

TAKEOFF MINIMUMS:
 Rwy 8R, 300-1 or Standard with minimum climb
 of 247' per NM to 1200, ATC climb of 500' per
 NM to 1500.
 Rwy 9L, 300-1¼ or Standard with minimum climb
 of 234' per NM to 1200, ATC climb of 500' per
 NM to 1480.

(Continued on next page)

NOTE: Chart not to scale

SE-4, 03 JUL 2008 to 31 JUL 2008

SE-4, 03 JUL 2008 to 31 JUL 2008

COKEM FOUR DEPARTURE (RNAV)

ATLANTA, GEORGIA