

CLEVELAND, OHIO

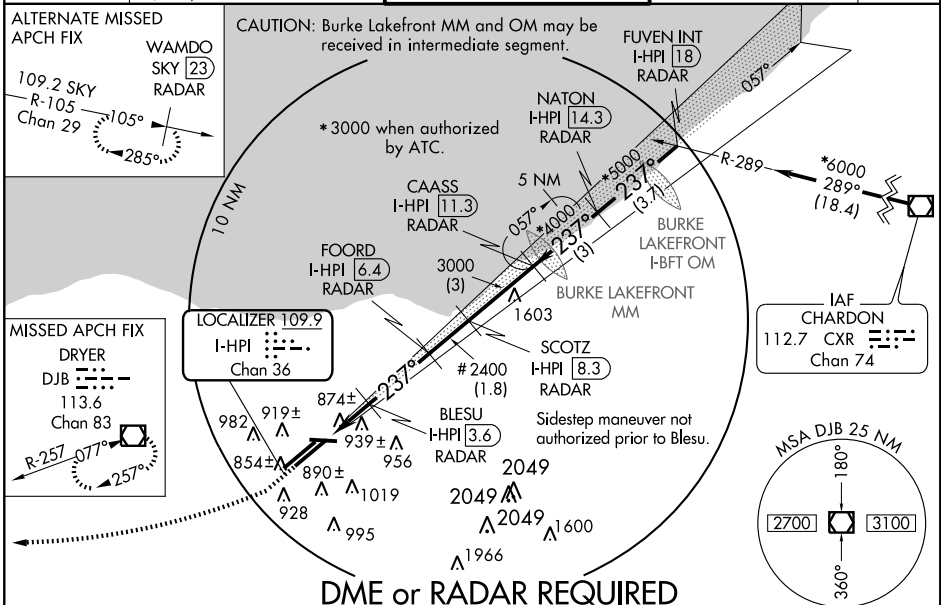
AL-84 (FAA)

LOC/DME I-HPI 109.9	APP CRS 237°	Rwy Idg 24R 9000 24L 8999
Chan 36		TDZE 780 786
		Apt Elev 791 791

ILS or LOC RWY 24L

CLEVELAND-HOPKINS INTL (CLE)

<p>▼ Inoperative table does not apply to S-LOC 24L Cats A,B,C. For inoperative MALSRS increase S-LOC 24L Cat D visibility to RVR 6000. For inoperative centerline lights and MALSRS, increase visibility S-ILS 24L and special aircrew and aircraft authorization required S-ILS 24L Cats A, B, C, RVR 5000, Cat D 6000.</p>		<p>24L MALSRS</p>	<p>24R ALSF-2</p>	<p>MISSED APPROACH: Climb to 1400, then climbing right turn to 3000 direct DJB VOR/DME and hold.</p>
<p>ATIS ARR 127.85 DEP 132.375</p>	<p>CLEVELAND APP CON 6R/24L, 28 6L/24R, 10 124.0 354.025</p>	<p>CLEVELAND TOWER 6R/24L, 10/28 120.9 273.45 6L/24R 124.5 273.45</p>	<p>GND CON 6R/24L, 10/28 121.7 6L/24R 133.6</p>	<p>CLNC DEL 125.05</p>



DME or RADAR REQUIRED

ELEV 791	237° 4.8 NM from FAF	1400	3000	DJB 113.6	VGSI and ILS glidepath not coincident.	FUVEN INT I-HPI [18] RADAR																																															
TDZE 780	845±	I-HPI [1.6]	BLESU I-HPI [3.6] RADAR	FOORD I-HPI [6.4] RADAR	SCOTZ I-HPI [8.3] RADAR	CAASS I-HPI [11.3] RADAR	NATON I-HPI [14.3] RADAR																																														
6017 X 150 0.5% UP	881±	# I-HPI [2.6]	2394	3000	3000	4000*	5000*	6000*																																													
8000 X 150	899 X 150	# LOC only	1460#	2400#	3000	4000*	5000*	6000*																																													
858±	930	0.9	1 NM	2.8 NM	1.8 NM	3 NM	3 NM	3.7 NM																																													
858±	930	<table border="1"> <thead> <tr> <th>CATEGORY</th> <th>A</th> <th>B</th> <th>C</th> <th>D</th> </tr> </thead> <tbody> <tr> <td>S-ILS 24L</td> <td></td> <td>1046/32</td> <td>260 (300-%)</td> <td></td> </tr> <tr> <td>S-LOC 24L</td> <td></td> <td>1140/50</td> <td>354 (400-1)</td> <td></td> </tr> <tr> <td>SIDESTEP RWY 24C</td> <td>1140-1½</td> <td>356 (400-1½)</td> <td>1140-1½</td> <td>1140-2</td> </tr> <tr> <td></td> <td></td> <td></td> <td>356 (400-1½)</td> <td>356 (400-2)</td> </tr> <tr> <td>SIDESTEP RWY 24R</td> <td>1140/60</td> <td>360 (400-1½)</td> <td>1140-1½</td> <td>1140-2</td> </tr> <tr> <td></td> <td></td> <td></td> <td>360 (400-1½)</td> <td>360 (400-2)</td> </tr> <tr> <td>CIRCLING</td> <td>1300-1</td> <td>509 (600-1)</td> <td>1300-1½</td> <td>1380-2</td> </tr> <tr> <td></td> <td></td> <td></td> <td>509 (600-1½)</td> <td>589 (600-2)</td> </tr> </tbody> </table>							CATEGORY	A	B	C	D	S-ILS 24L		1046/32	260 (300-%)		S-LOC 24L		1140/50	354 (400-1)		SIDESTEP RWY 24C	1140-1½	356 (400-1½)	1140-1½	1140-2				356 (400-1½)	356 (400-2)	SIDESTEP RWY 24R	1140/60	360 (400-1½)	1140-1½	1140-2				360 (400-1½)	360 (400-2)	CIRCLING	1300-1	509 (600-1)	1300-1½	1380-2				509 (600-1½)	589 (600-2)
CATEGORY	A	B	C	D																																																	
S-ILS 24L		1046/32	260 (300-%)																																																		
S-LOC 24L		1140/50	354 (400-1)																																																		
SIDESTEP RWY 24C	1140-1½	356 (400-1½)	1140-1½	1140-2																																																	
			356 (400-1½)	356 (400-2)																																																	
SIDESTEP RWY 24R	1140/60	360 (400-1½)	1140-1½	1140-2																																																	
			360 (400-1½)	360 (400-2)																																																	
CIRCLING	1300-1	509 (600-1)	1300-1½	1380-2																																																	
			509 (600-1½)	589 (600-2)																																																	
TDZ/CL Rwy 6R, 6L, and 24R	858±	<table border="1"> <thead> <tr> <th>Knots</th> <th>60</th> <th>90</th> <th>120</th> <th>150</th> <th>180</th> </tr> </thead> <tbody> <tr> <td>Min:Sec</td> <td>4:48</td> <td>3:12</td> <td>2:24</td> <td>1:55</td> <td>1:36</td> </tr> </tbody> </table>							Knots	60	90	120	150	180	Min:Sec	4:48	3:12	2:24	1:55	1:36																																	
Knots	60	90	120	150	180																																																
Min:Sec	4:48	3:12	2:24	1:55	1:36																																																
REIL Rwy 28		SPECIAL AIRCREW and AIRCRAFT CERTIFICATION AUTHORIZATION REQUIRED																																																			
HIRL Rwys 10-28, 6R-24L, and 6L-24R		S-ILS 24L 1046/24 260 (300-½)																																																			
FAF to MAP 4.8 NM																																																					

CLEVELAND, OHIO

Amdt 19A 08157

41°25'N - 81°51'W

CLEVELAND-HOPKINS INTL (CLE)

ILS or LOC RWY 24L

EC-2, 03 JUL 2008 to 31 JUL 2008

EC-2, 03 JUL 2008 to 31 JUL 2008