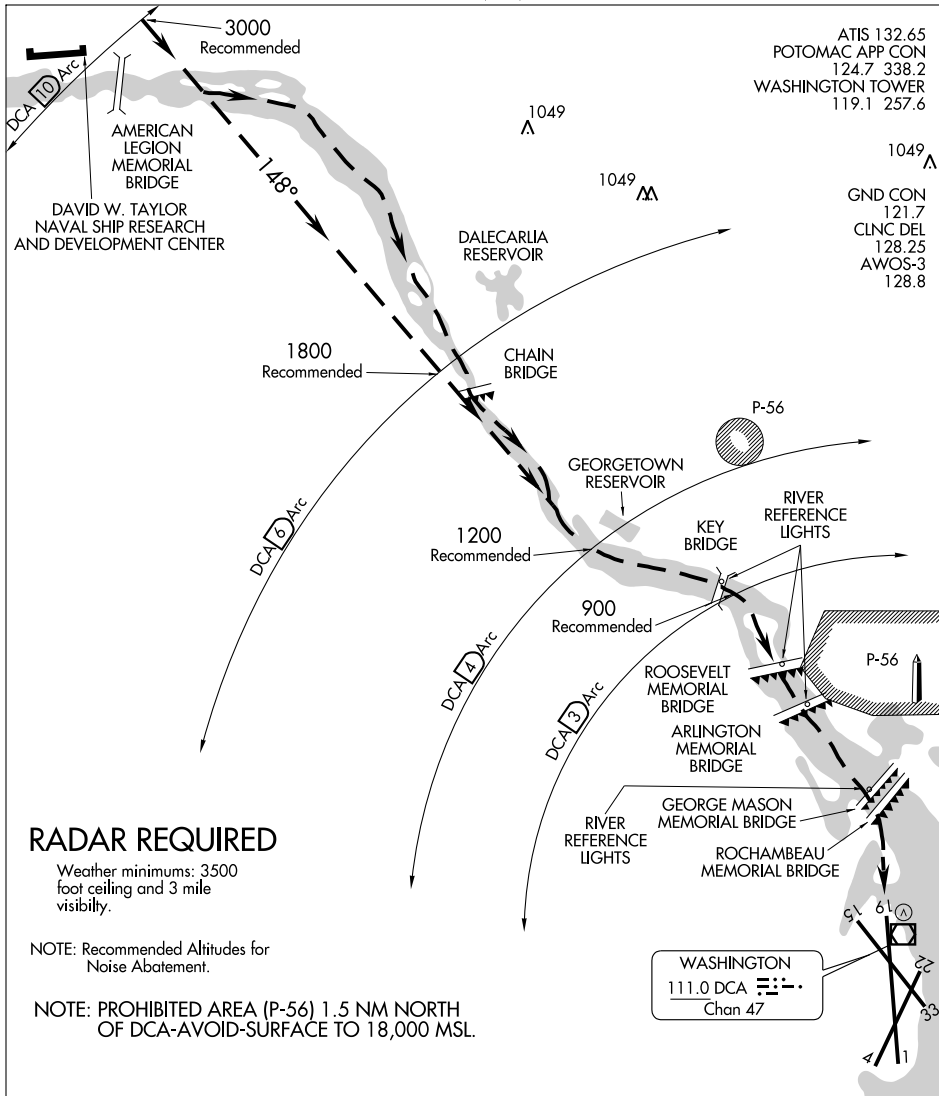


RIVER VISUAL RWY 19

WASHINGTON/ RONALD REAGAN WASHINGTON NATIONAL (DCA)
AL-443 (FAA) WASHINGTON, DC

ATIS 132.65
POTOMAC APP CON 124.7 338.2
WASHINGTON TOWER 119.1 257.6



NE-3, 03 JUL 2008 to 31 JUL 2008

NE-3, 03 JUL 2008 to 31 JUL 2008

RADAR REQUIRED

Weather minimums: 3500 foot ceiling and 3 mile visibility.

NOTE: Recommended Altitudes for Noise Abatement.

NOTE: PROHIBITED AREA (P-56) 1.5 NM NORTH OF DCA-AVOID-SURFACE TO 18,000 MSL.

WASHINGTON
111.0 DCA
Chan 47

1 NM	2	3	4	5	6	7
------	---	---	---	---	---	---

RIVER VISUAL RWY 19

Aircraft may visually follow the river to the airport, or may proceed via the DCA VOR/DME R-328 (148° inbound) or via the Rosslyn LDA Rwy 19 Approach to abeam Georgetown Reservoir or the DCA 4 NM DME fix, then follow the river to the airport.

NOTE: Clearance for visual approach does not authorize penetration of P-56.

RIVER VISUAL RWY 19

38°51'N-77°02'W

WASHINGTON, DC