

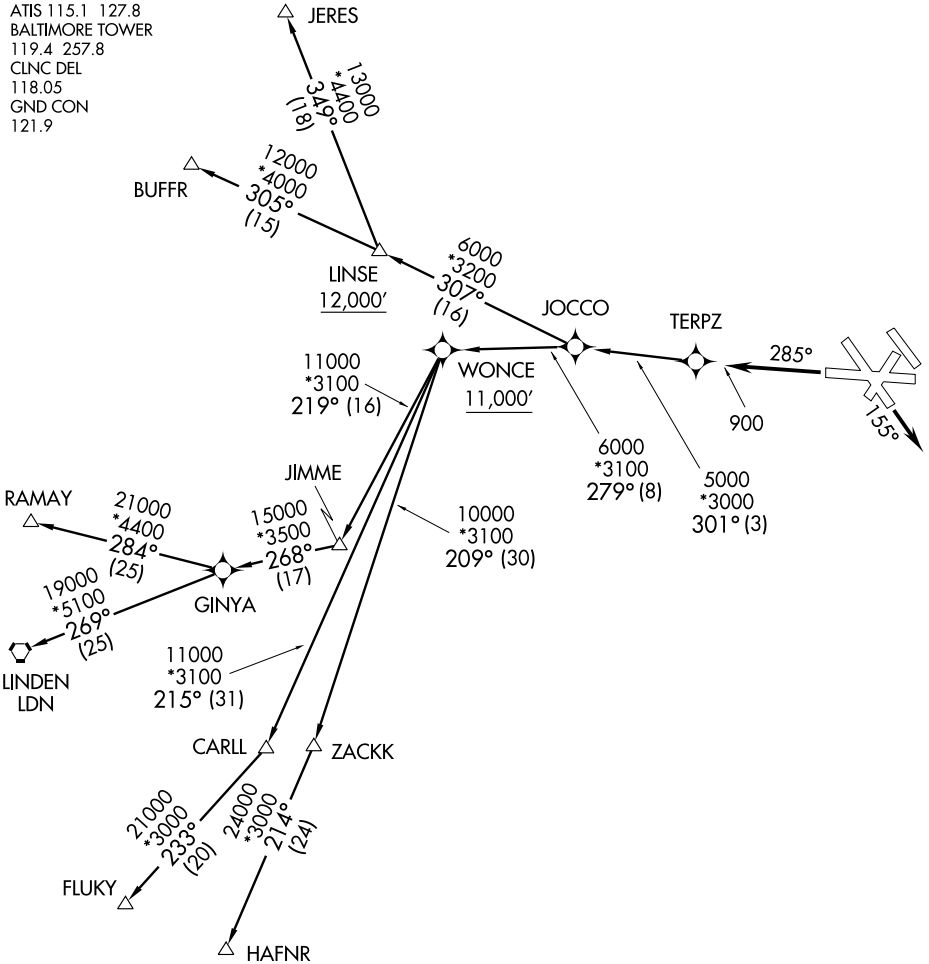
(TERPZ1.TERPZ) 07298

SL-804 (FAA)

BALTIMORE/
WASHINGTON INTL THURGOOD MARSHALL (BWI)
BALTIMORE, MARYLAND

TERPZ ONE DEPARTURE (RNAV)

ATIS 115.1 127.8
BALTIMORE TOWER
119.4 257.8
CLNC DEL
118.05
GND CON
121.9



NE-3, 03 JUL 2008 to 31 JUL 2008

NE-3, 03 JUL 2008 to 31 JUL 2008

TAKE-OFF OBSTACLES:

Rwy 28: Tree 1392' from DER, 736' left of centerline, 77' AGL/176' MSL.
Rwy 15R: Multiple Trees beginning 1144' from DER, 740' right of centerline, up to 53' AGL/172' MSL.

NOTE: DME/DME/IRU or GPS Required.
NOTE: RNAV 1.

NOTE: RADAR required.
NOTE: Maintain 250 Kias to TERPZ.

TAKE-OFF MINIMUMS:

Rwys 4, 10, 15L, 28, 33L, 33R: NA - Air Traffic.
Rwys 15R/28: JERES, BUFFR TRANSITIONS:
STANDARD with ATC climb of 500' per NM to 12,000'.
Rwys 15R/28: RAMAY, LINDEN, FLUKY, HAFNR TRANSITIONS:
STANDARD with ATC climb of 500' per NM to 11,000'.

NOTE: Chart not to scale.

(NARRATIVE ON FOLLOWING PAGE)

TERPZ ONE DEPARTURE (RNAV)
(TERPZ1.TERPZ) 07298

BALTIMORE/
WASHINGTON INTL THURGOOD MARSHALL (BWI)
BALTIMORE, MARYLAND