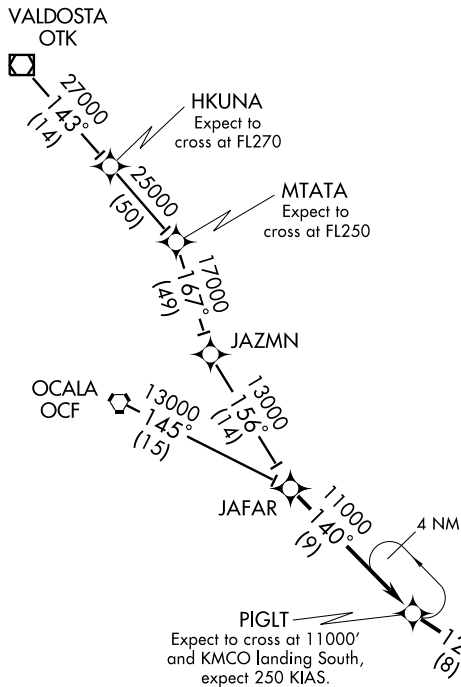


ORLANDO APP CON
125.55 338.2
ORLANDO INTL ATIS
121.25



NOTE: Radar Required.
 NOTE: DME/DME/IRU or GPS Required.
 NOTE: RNAV 1.
 NOTE: Turbojet aircraft only.
 NOTE: For non-GPS equipped aircraft, OMN and ORL must be operational.

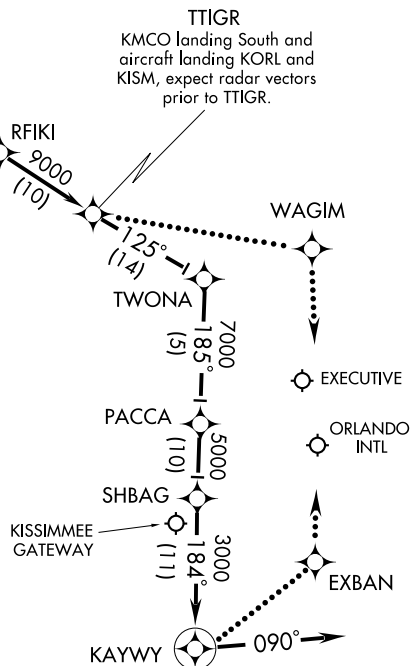
ARRIVAL ROUTE DESCRIPTION

OCALA TRANSITION (OCF.PIGLT1):
VALDOSTA TRANSITION (OTK.PIGLT1):

From over JAFAR via 140° track to PIGLT, thence as depicted to KAYWY.

LOST COMMUNICATIONS:
NORTH OPERATION: Continue track to JAFAR, track to KAYWY, track to EXBAN, then turn left to intercept RWY 36L final approach course, conduct approach.
SOUTH OPERATION: Continue track to JAFAR, track to TTIGR, track to WAGIM, then turn right to intercept RWY 18R final approach course, conduct approach.

SOUTH OPERATION: Continue track to JAFAR, track to TTIGR, track to WAGIM, then turn right to intercept RWY 18R final approach course, conduct approach.



NOTE: Chart not to scale.

SE-3, 03 JUL 2008 to 31 JUL 2008

SE-3, 03 JUL 2008 to 31 JUL 2008